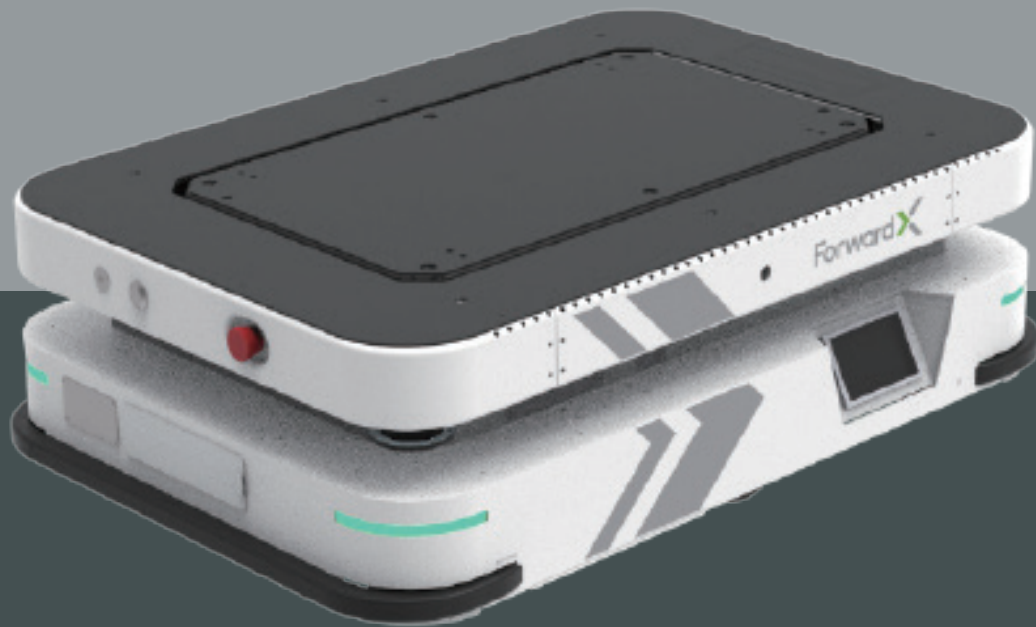


RICHMOND FLEX 300-L

Intelligently Reshaping Warehousing and Manufacturing Business Processes

Flex 300-L is equipped with a lifting function, combining with the sensors and cameras allow for autonomous rack position detection and docking. The fully unmanned handling of racks and picking containers reduces personnel involvement and drastically increases efficiency and productivity in the picking process.



FLEX 300-L

PRODUCT SPECIFICATION



FLEX 300-L

Dimensions	Length	950 mm (37.40 in)
	Width	650 mm (25.59 in)
	Height	295 mm (11.61 in)
	Lifting Height	60 mm (2.36 in)
	Ground Clearance	20 mm (0.78 in)
	Turning Diameter	1,120 mm (44.09 in)
	Payload	Weight
Max. Payload		300 kg (661 lbs)
Load Surface		670 x 390 mm
Performance	Navigation Mode	Natural / Road Network / Hybrid
	Positioning Mode	Laser SLAM / Visual / Optional QR Code Navigation
Communication	Wi-Fi (IEEE 802.11a/b/g/n/ac)	Yes
	Wi-Fi (IEEE 802.11ax)	Optional
	Cellular Network (Public 4G/5G)	Optional
Power	Endurance	~8 hrs Per Charge
	Battery Type	LFP
	Charging Mode	DC CC-CV
	Battery Swap	Yes
Sensors	LiDAR	2
	UWA Cameras	1
	Marker Camera	1
	3D Cameras	1
	Odometer	1
	IMU	1
Interaction	Audio	Yes
	Lights	Yes
	Screen	-
Safety	Safety Bumper	Yes
	Emergency Stop Button	2
Compliance	CE	Yes